

2019

B. Sc.

1st Semester Examination

GEOLOGY (General)

Paper - DSC 1A-P

(Practical)

PHYSICAL AND STRUCTURAL

Full Marks : 20

Time : 3 Hours

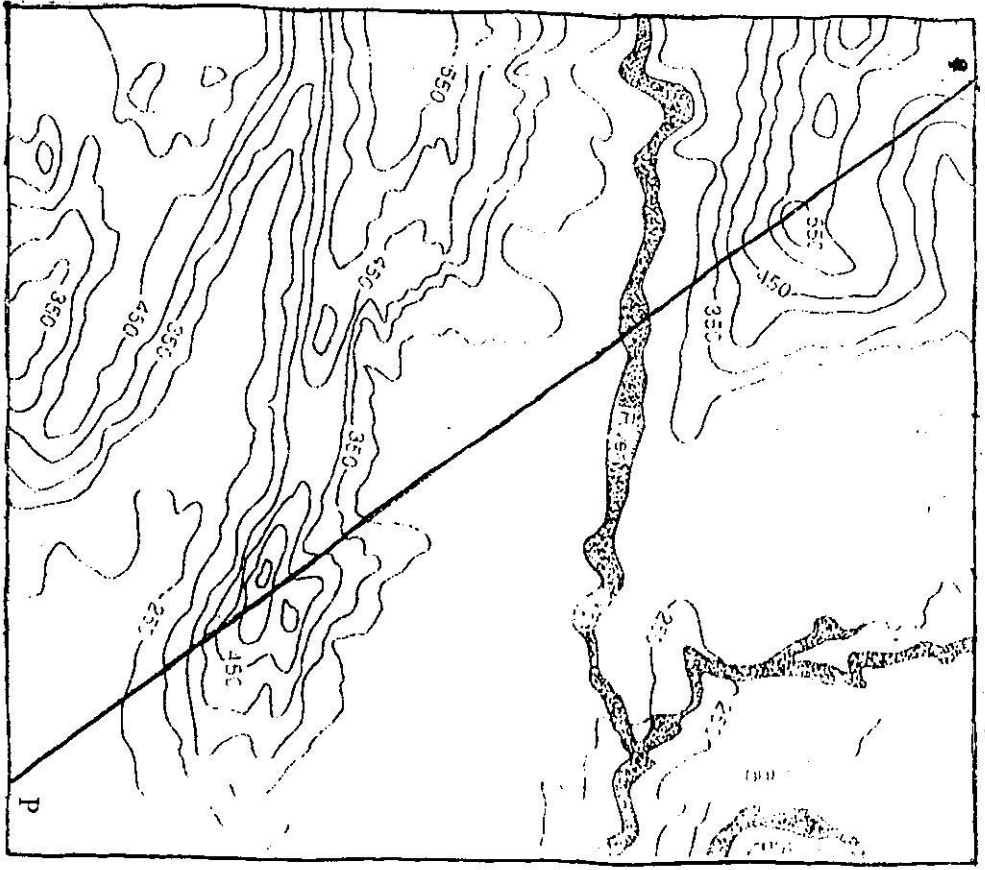
*The figures in the margin indicate full marks.
Candidates are required to give their answers
in their own words as far as practicable.*

1. Draw block diagram of a thrust. 4
2. Draw a profile section along OP of the given contour map and give physiographic description of the area.
[Note : Map attached with this question] 5
3. Identify the geomorphic features from the given contour patterns and describe each of them. 6

[Note : Girures attached with this question]

4. Laboratory Note book. 2

5. General viva-voce. 3



All Heights are in metres



2/107-500

Question No. : 3

N
↑

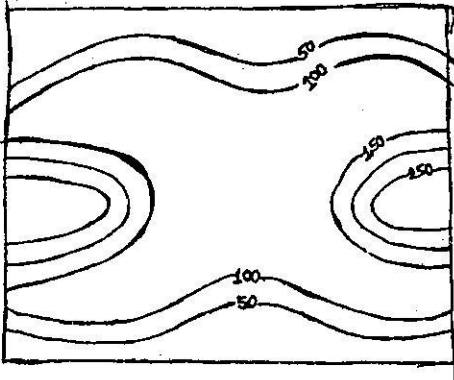


Fig: -1

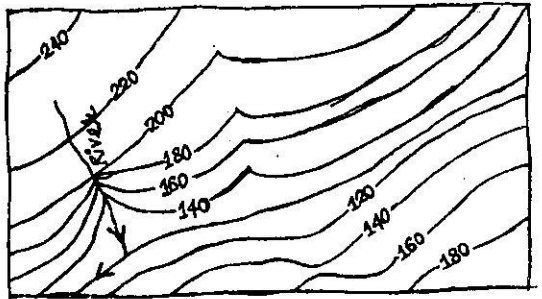


Fig: -2

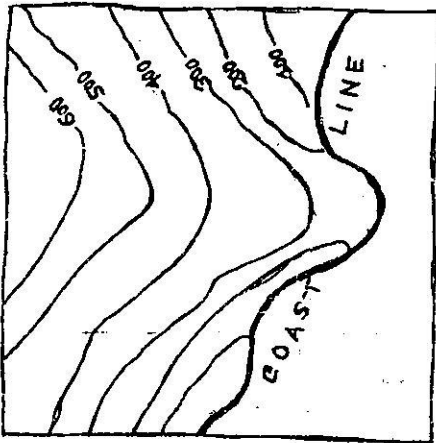


Fig: -3

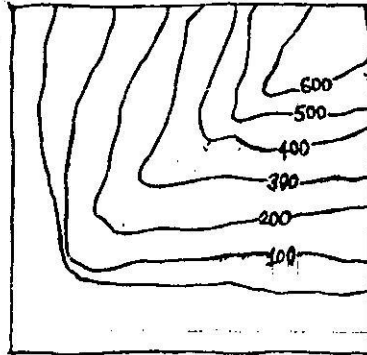


Fig: -4

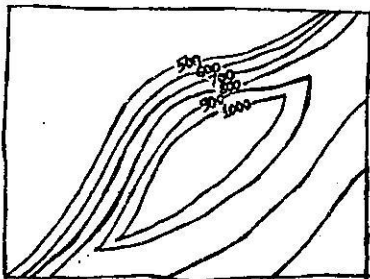


Fig: -5

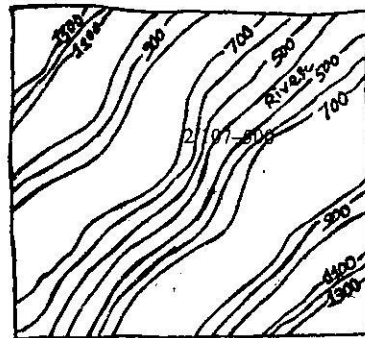


Fig: -6

All Heights are in metres