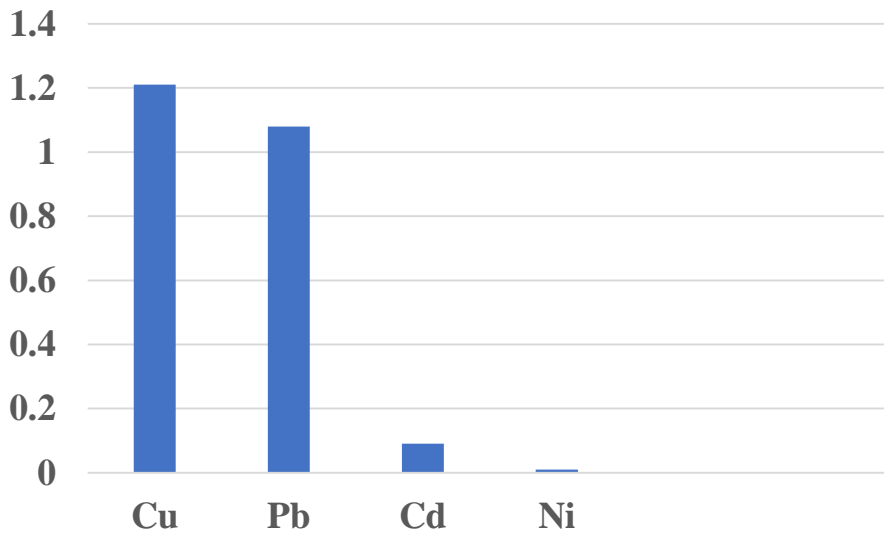
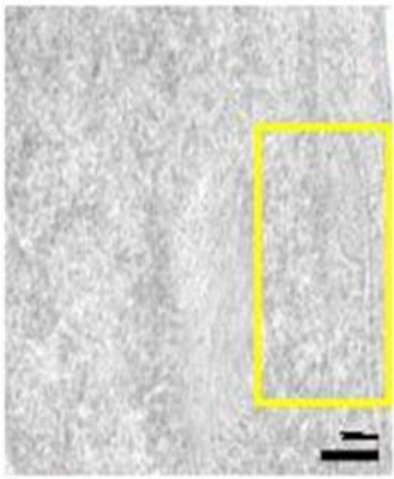


Heavy Metals	Mass (Percentage)
Cu	1.21
Pb	1.08
Cd	0.09
Ni	0.01

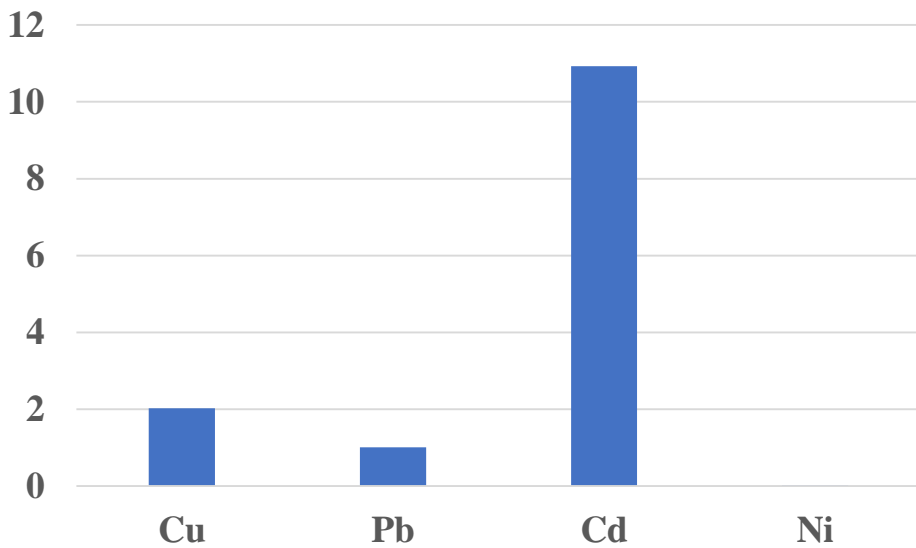


■ Mass Percentage

Table I – Energy Dispersive X-Ray Analysis report indicates the bioaccumulation level of heavy metals at axon hillock region of cOSRN in *M. armatus*.



Heavy Metals	Mass (Percentage)
Cu	2.03
Pb	1.01
Cd	10.93
Ni	0.02



■ Mass Percentage

Table II
Energy Dispersive X-Ray Analysis report indicates bioaccumulation level of heavy metals at axon hillock region of cOSRN in *M. armatus*.