

Appendix 4: The status of the individual schools as per the proposed standard has been visualized here. For details regarding the schools, Appendix 3 is hereby referred.

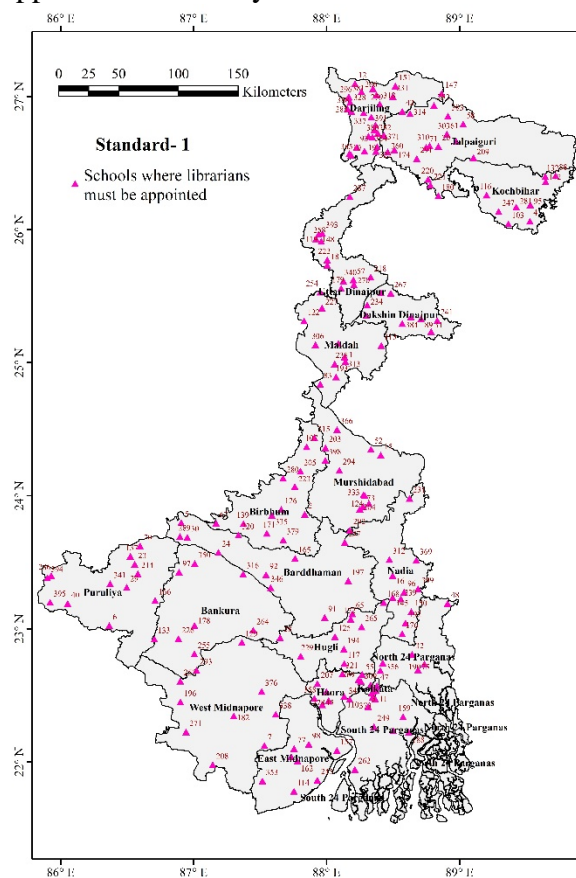


Figure 1 Locations of schools where librarians must be appointed.

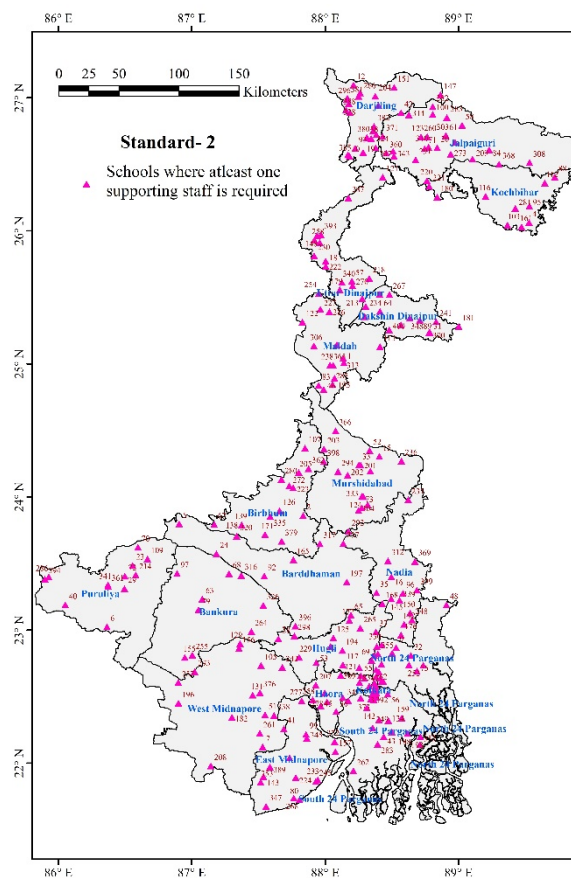


Figure 2 Location of schools where atleast one supporting staff is required.

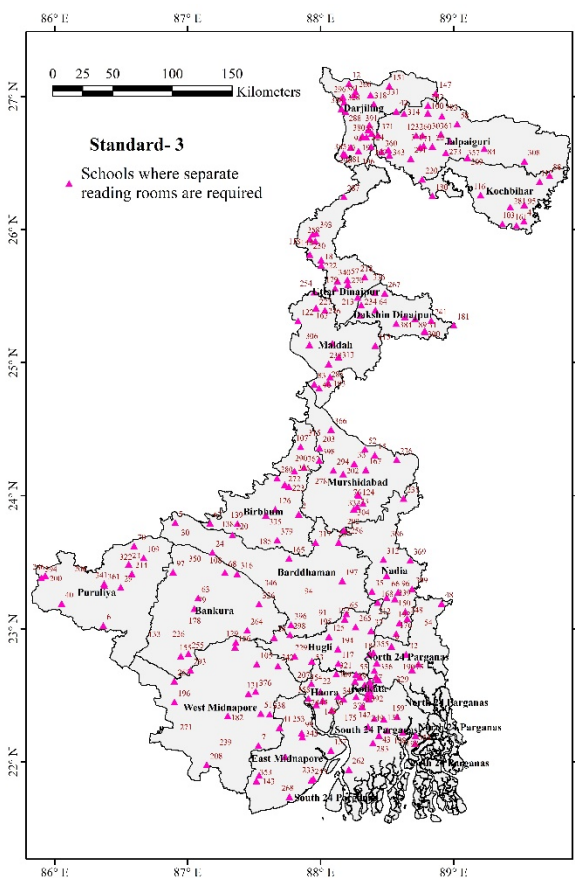


Figure 3 Location of schools where separate reading rooms are required.

Appendix – 4

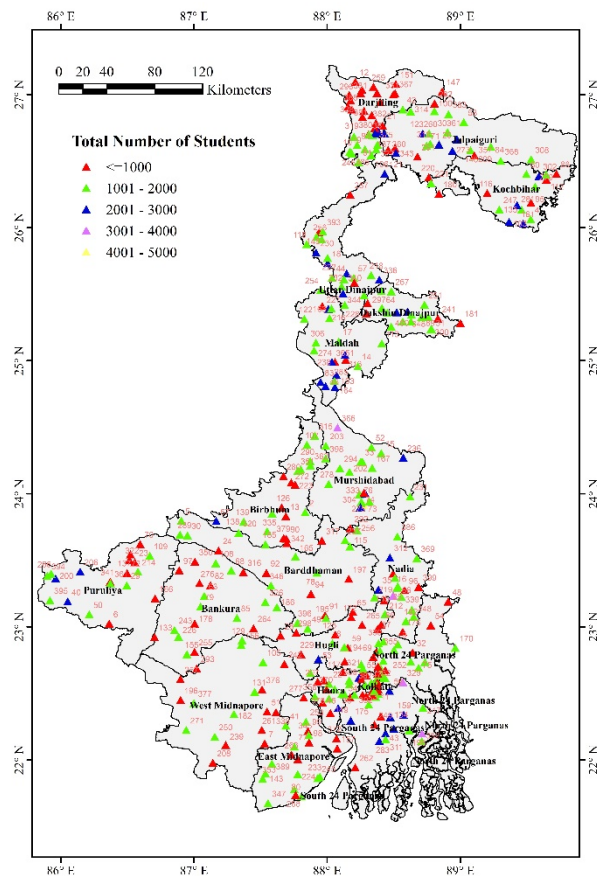


Figure 4 Map showing classification of schools in terms of total number of students.

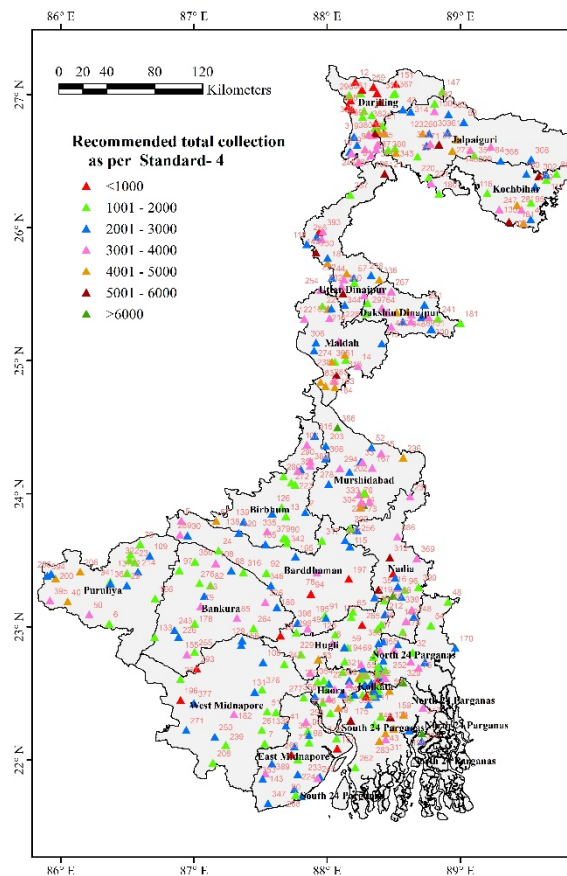


Figure 5 Map showing classification of schools in terms of the recommendations of total collection as per the Standard- 4.

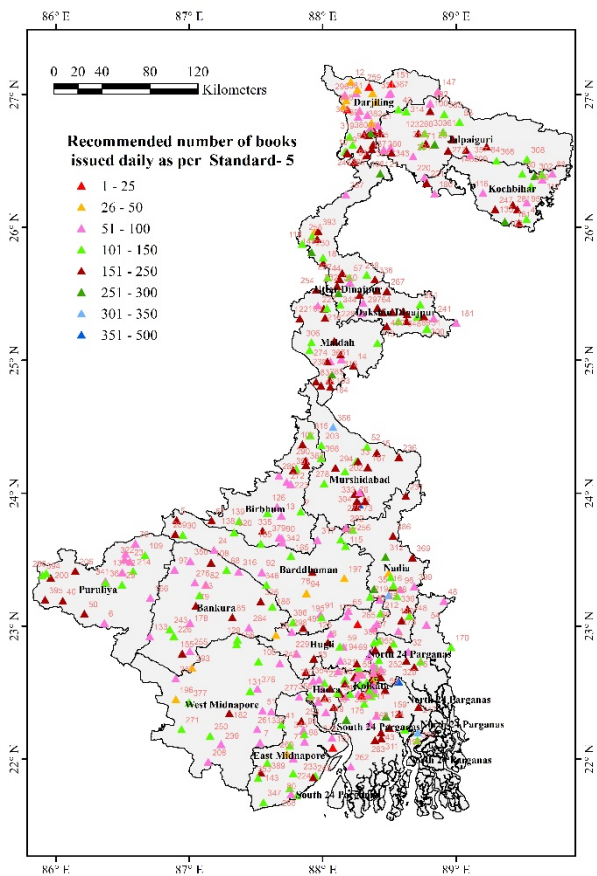


Figure 6 Map showing classification of schools in terms of the recommendations of books issued daily as per the Standard- 5.

Appendix – 4

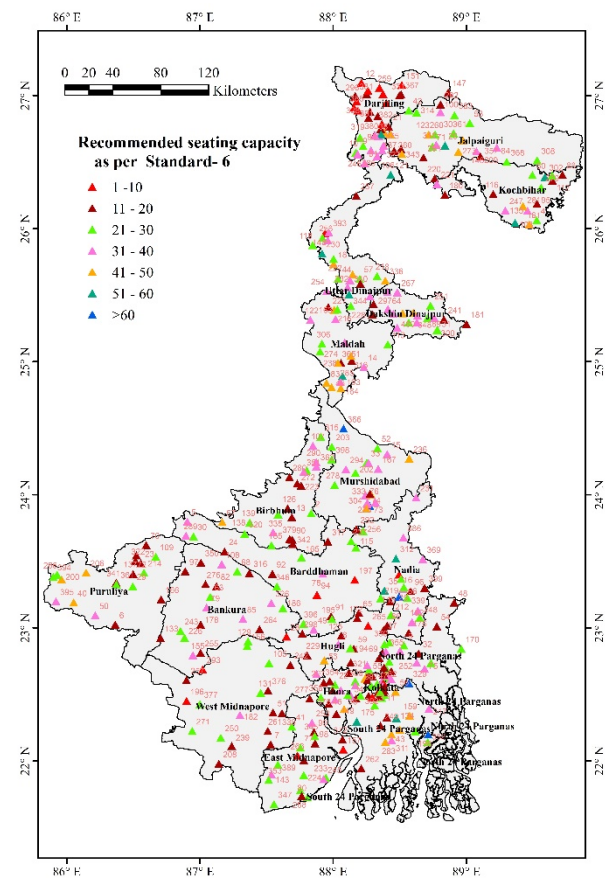


Figure 7 Map showing classification of schools in terms of the recommendations of seating capacity as per the Standard- 6.

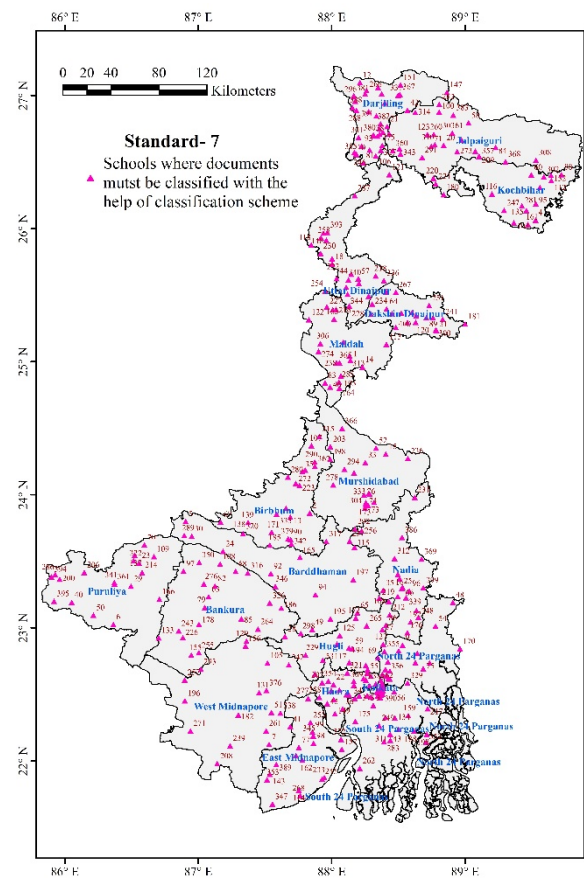


Figure 8 Location of schools where documents must be classified with the help of classification scheme.

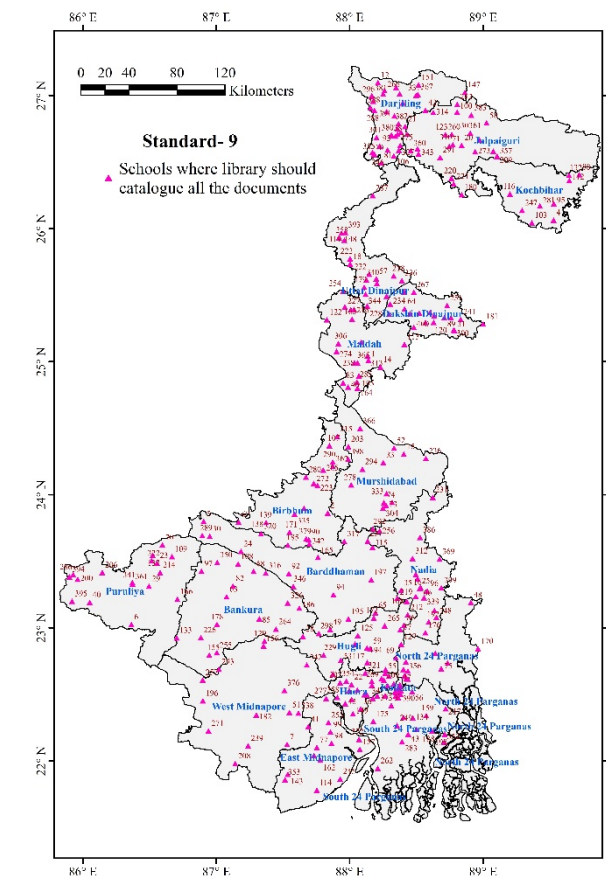


Figure 9 Location of schools where library should catalogue all the documents.

Appendix – 4

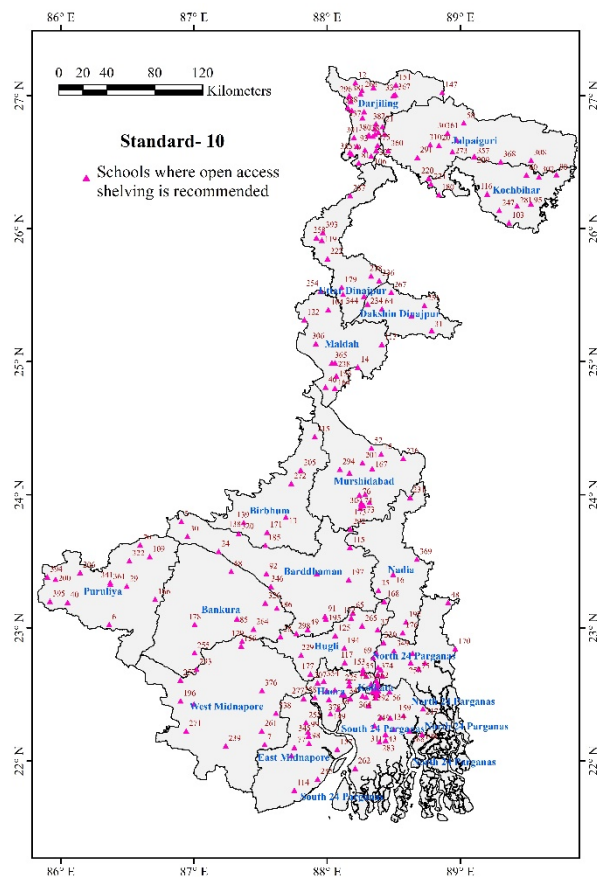


Figure 10 Location of schools where open access shelving is recommended.

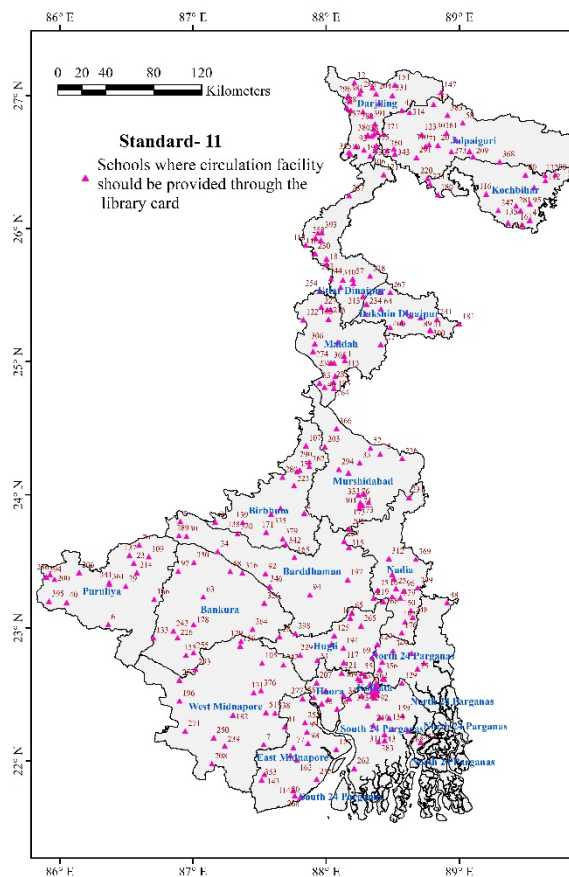


Figure 11 Location of schools where circulation facility should be provided through the library card.

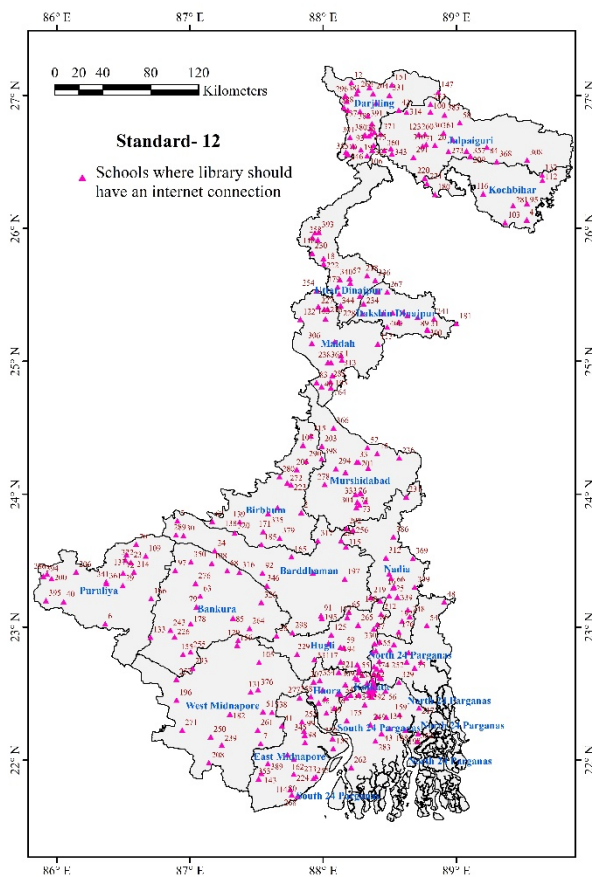


Figure 12 Location of schools where library must be equipped with internet connection.